

ATELIER DU PONT

/19 SOCIAL-HOUSING UNITS AND SHOP IN BELLEVILLE STREET, PARIS (FRANCE)



/BASICS INFORMATIONS

PLOT SIZE : 540 M²

SURFACE : 1 257 M² SDP

COST : 3 M€ HT

ADDRESS : 36 RUE DE BELLEVILLE, 75020 PARIS

ARCHITECT PROJECT MANAGER : LUC PINSARD

SUSTAINABILITY : RT 2005

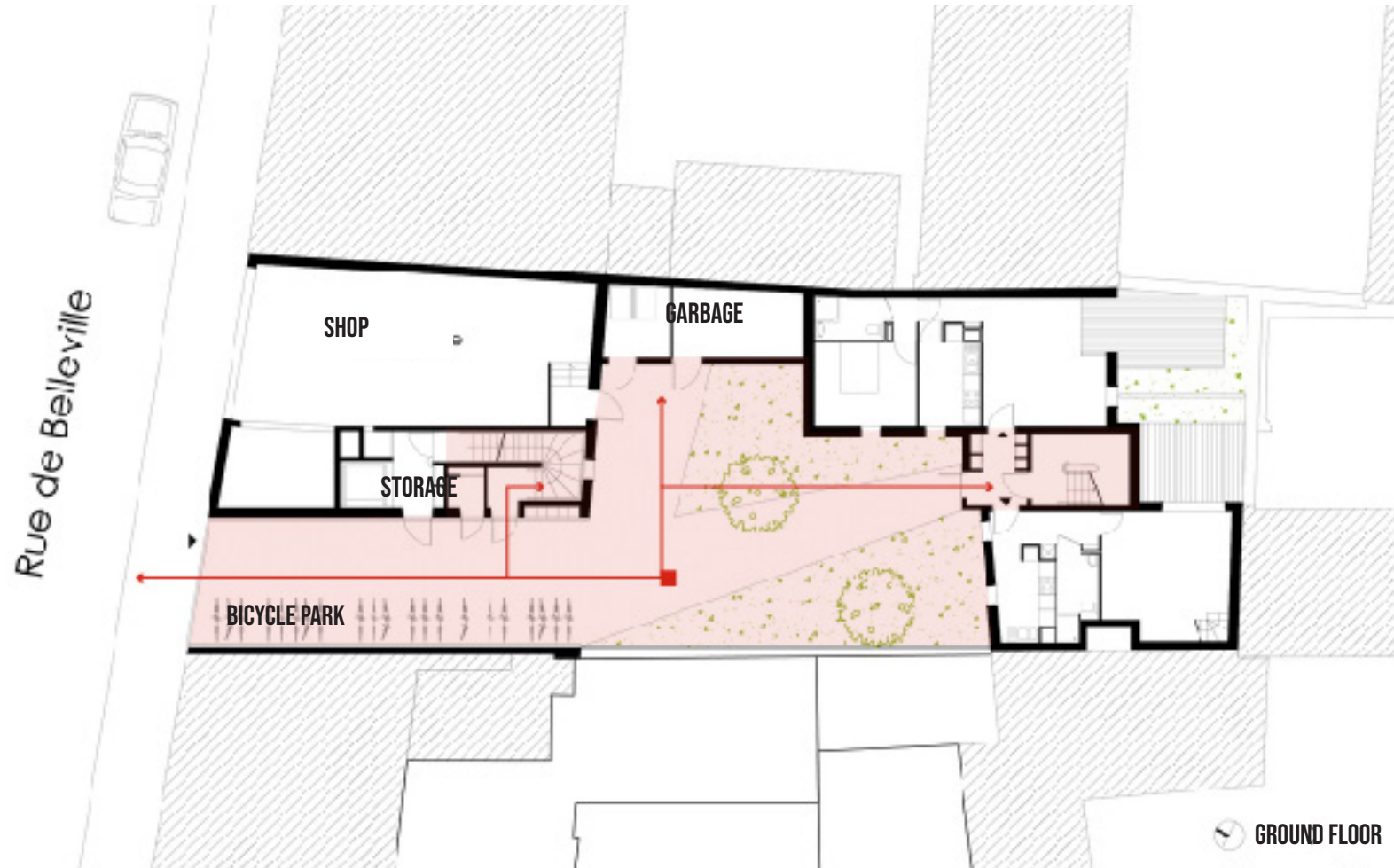
DATE : 2018



ROOF PLAN



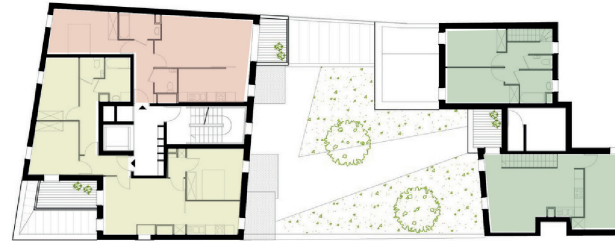
/SHOP AND HOUSINGS, TRANSITION BETWEEN PUBLIC AND PRIVATE



/ 19 APARTMENTS OF DIFFERENT TYPE



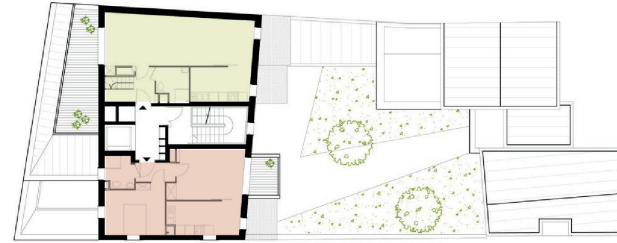
FLOOR 1



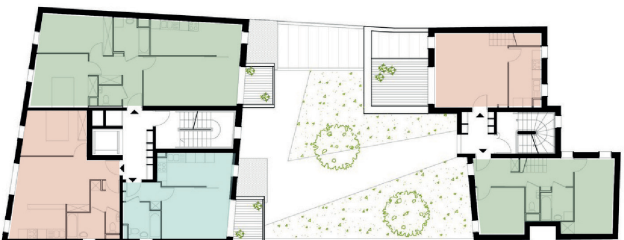
FLOOR 4



FLOOR 2



FLOOR 5



FLOOR 3



FLOOR 6

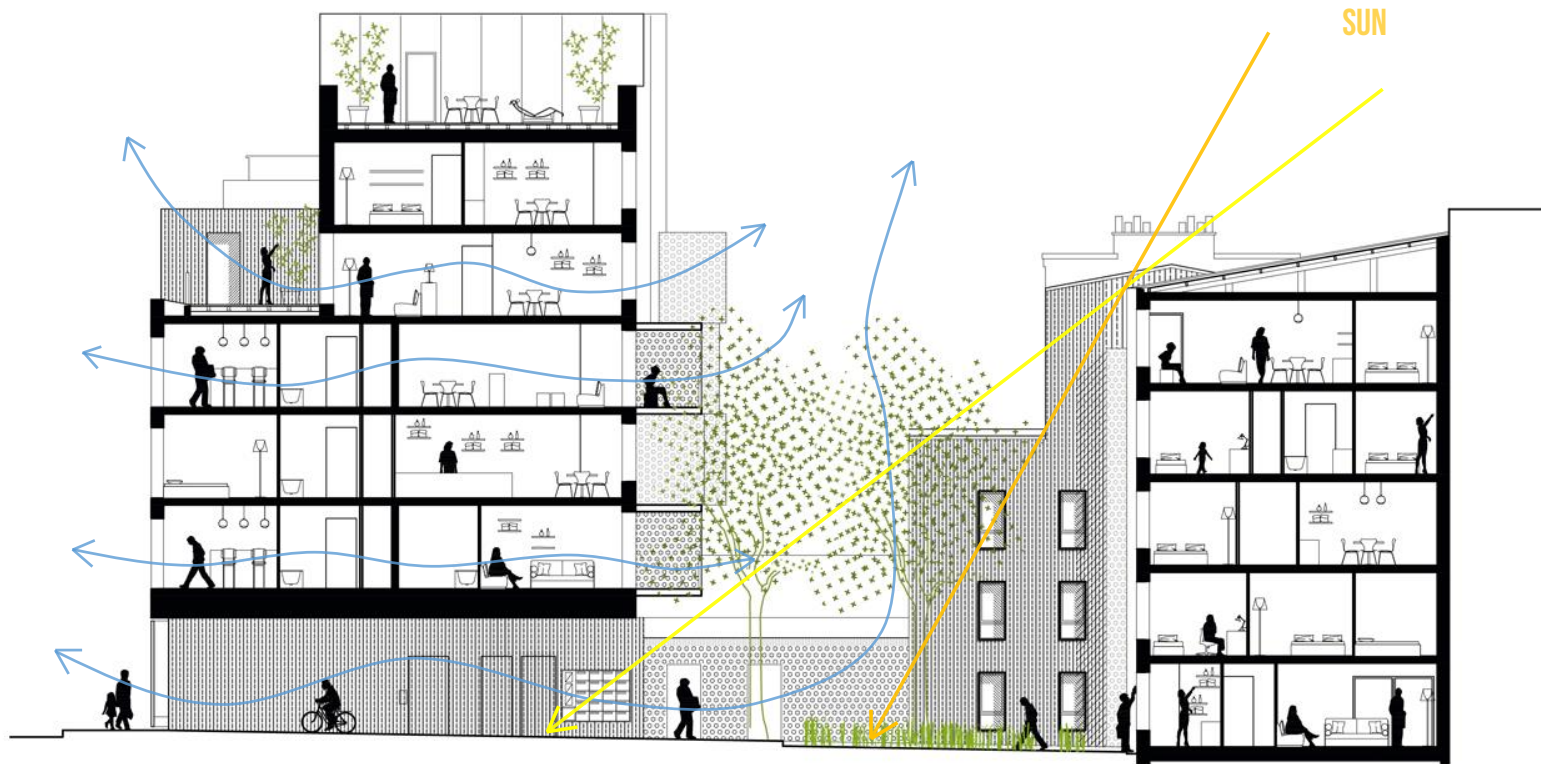
-  4 ROOMED APARTMENT
-  3 ROOMED APARTMENT
-  2 ROOMED APARTMENT
-  STUDIO

/ VISIBILITY



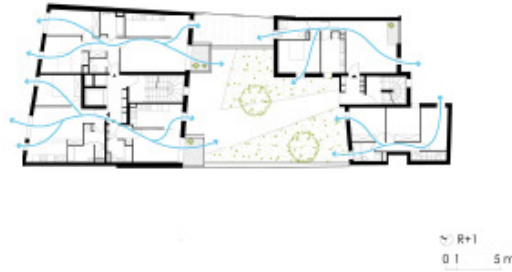
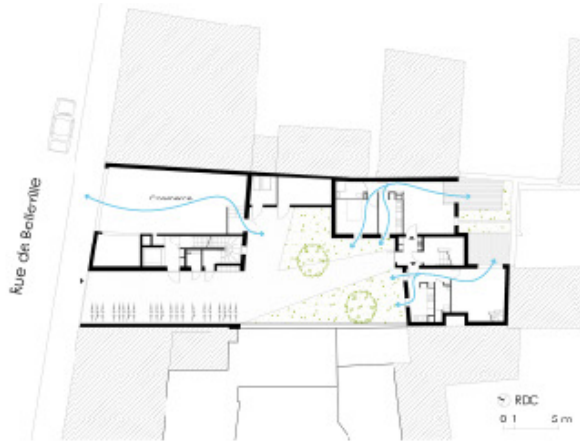
 FLOOR 2

/ VENTILATION AND LIGHT



SECTION

/ VENTILATION AND LIGHT



/ COMFORT - ACCESS TO THE OUTSIDE



/ MIXING CONCRETE AND METAL

